

ALTINEL SHIPYARDS INC

www.altinelshipyards.com info@altinelshipyards.com



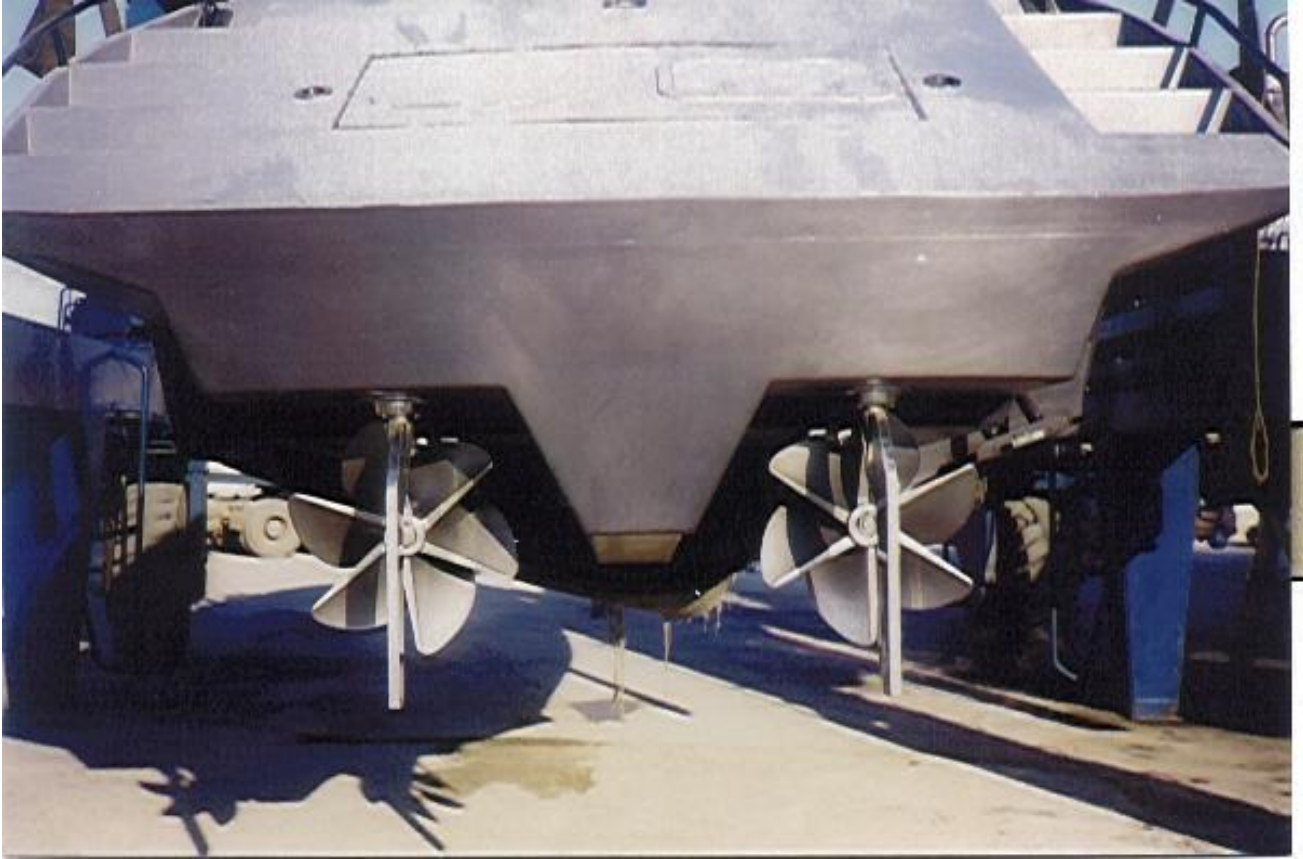
ALTINEL SHIPYARDS INC

www.altinelshipyards.com info@altinelshipyards.com



ALTINEL SHIPYARDS INC

www.altinelshipyards.com info@altinelshipyards.com



ALTINEL SHIPYARDS INC

www.altinelshipyards.com info@altinelshipyards.com



ALTINEL SHIPYARDS INC

www.altinelshipyards.com info@altinelshipyards.com

Principal Characteristics

Construction Material	Fiberglas / Composite
Hull Form	: Mono hull - Planning hull – Deep Vee
Length (Loa)	:12.65 m.
Beam (B)	:3.60 m. (at midship)
Draft (D)	:0.75 m. (full load)
Height (D)	:1.80 m. (at midship)
Fuel Capacity (approx.)	:1700 Lit.
Watertight Bulkhead	:4
Cabin Height	:1.85 m.
Max. Speed (approx.)	:47 Mile Per Hour
Cont. Speed (approx.)	: 42 Mile Per Hour
Endurance (approx.)	:300 miles
DWT	:1250 kg
Accommodations	:12 seat in cabin 4 seat on
Crew	:2 persons
Environment	:Fully operational up to sea state 2
Class	: Dual Class Certification (RINA (optional) or Turkish Lloyd)
Standards	:SOLAS 74, IMO, ISO, TSE, NATO STANAGS

Propulsion

Engine Maker	:CATERPILLAR - USA
Model	:3196 TA – E Rating
Power	:2 x 492 KW (2x 669 HP) @ 2300 rpm
Gear Box Maker	:ZF – Germany / Italy
Model	:IRM 312 TS (Two Speed)
Reduction	:1.195 – 1 : 1.432
Drives	:ZF Trimax 2200 I
Propeller	:SST; 6 blades; ROLLA

Electrical

Rectifier	:VICTRON – SKYLLA 220 V AC, 50 Hz, 1 Phase (input) 24 V AC (output)
Cables	:Marine Type
Batteries	:2 x 200 A. Starter, 2 x 200 A. Service

Fire Fighting

Devices	:Remote Controlled CO2 System in Engine Room
Minimaxes	:4 x 1 kg. At Cabin and Cockpit

Navigation

Radar	:RC Scan Radar
GPS	:SIMRAD GPS (Plotter Chart) – CP 32
Fluxgate Compass	:SIMRAD – RFC 35 NMEA Compass

Communication

Marine brand VHF Foundation and cabling :SAILOR – RT 2048 / D (DUBLEX & SIMPLEX)

ALTINEL SHIPYARDS INC

www.altinelshipyards.com info@altinelshipyards.com

Weapons

Weapon Foundations :Telescopic at both sides at rear for M-60

General Description

This boat has been designed for;
To accomplish the patrol mission various objectives,
To transport the military personnel to the operation area.
This boat is designed for to be transported via air by plane or helicopter
and via land by a trailer to the operation area.

This boat has been constructed as follows;
Single deck,
Sharp and curved bow, perpendicular transom.
The boat has been moulded by fibreglass material. The sections of the boat

are described as follows;
Fore pik, chain locker under the deck,
Bow cofferdam,
Transom cofferdam,
Bow ballast tanks,
Personnel cabin,
Fuel tanks compartment (between two bulk heads),
Engine room; above aft deck ,
Aft pick and rudder section.

Ship Building Specification of this boat covers all technical aspects for the abovementioned objectives and performance. These technical aspects generally covers all ship building rules, standards, criteria, see keeping, construction, equipment and material. Also it explains how to apply design, project and workmanship with the understanding of quality. During the design aspect and material selection, high reliance and low maintenance has been fore kept.

Altinel Shipyards have done the following;
Projects& engineering studies
Design drawings
Workmanship drawings
Production coordination services
Construction
Production
Integration
Quality control
Get Class Society services
Material purchasing
Project management

During the design, construction and production phase of the boat, the following rules and standards has been applied;

RINA and Turkish Lloyd (Dual Class)
TSE
IMO
ISO
SOLAS 74
NATO (Navy) STANAGS

ALTINEL SHIPYARDS INC

www.altinelshipyards.com info@altinelshipyards.com

The project drawings had been approved by RINA, and construction and production had been surveyed by RINA and Turkish Lloyd (Dual Clas), and the boat has been certified 100 / A / 1.1 / Y class notification.

All details about 42' Fast Patrol Boats (SAT) are at www.altinelshipyard.htmlplanet.com and www.altinelshipyards.com internet sites and PDF files and pictures at attachments.

We will deliver bellow items with 2 boats,

1. Building specifications
2. Certificates of equipment
3. Documentations (manuels, brochures, catalogues, photos, etc.)
4. Spare parts on board (for 6 months)
5. Spare parts on shore (for overall & 2 years)
6. Design drawings & calculations (RINA & Turkish Loyd approved)
7. Workmanship drawings
8. Sea keeping calculations (polar formats)
9. Stability calculations (damaged & undamaged)
10. Underwater noise calculations, reports & test results
11. Endurance calculations
12. Training program (for operations & maintenance)
13. Tests for acceptance (FAT – factory tests, HAT – harbor tests, SAT – sea trail tests, IT & ITSW – Integration tests)
14. Class society certificates from Turkish Lloyd
15. Maker's list
16. Tools
17. Trailers for transport by TIR

Warranty is one year for main engines & equipment, two years for hull,

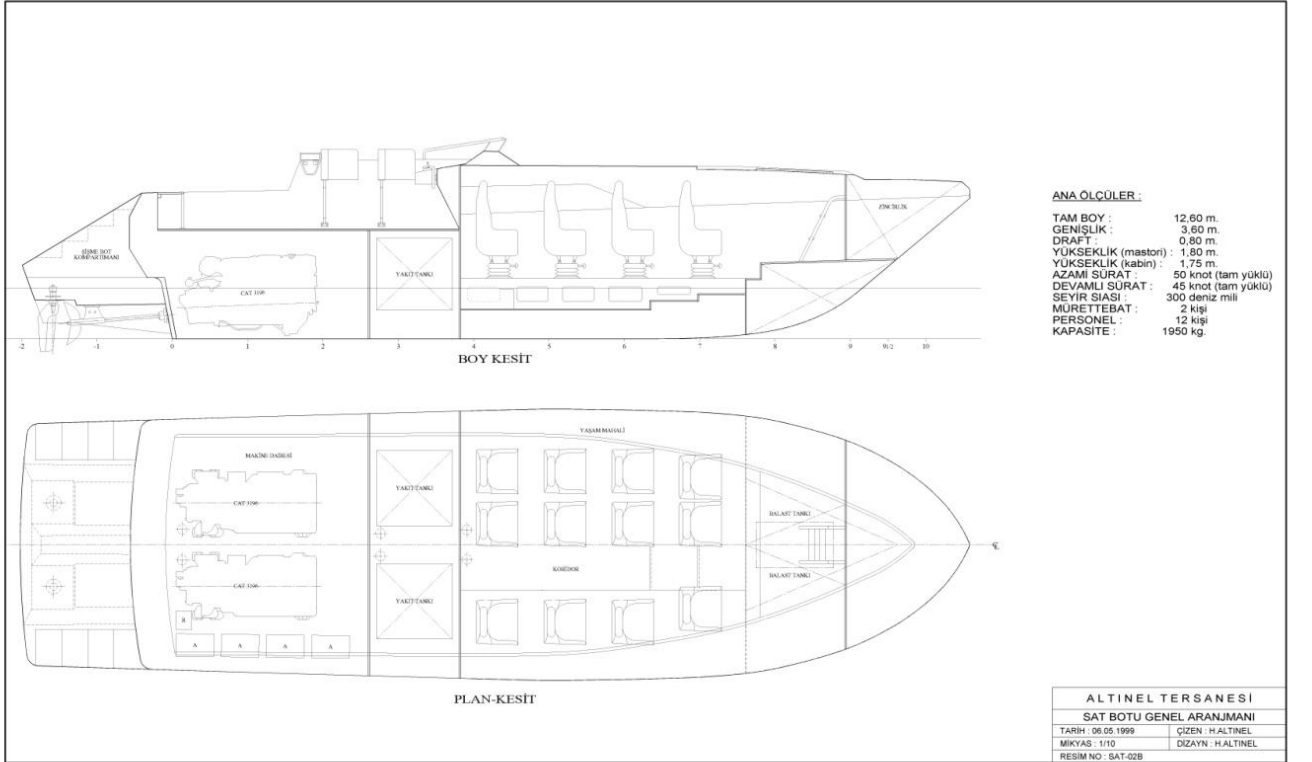
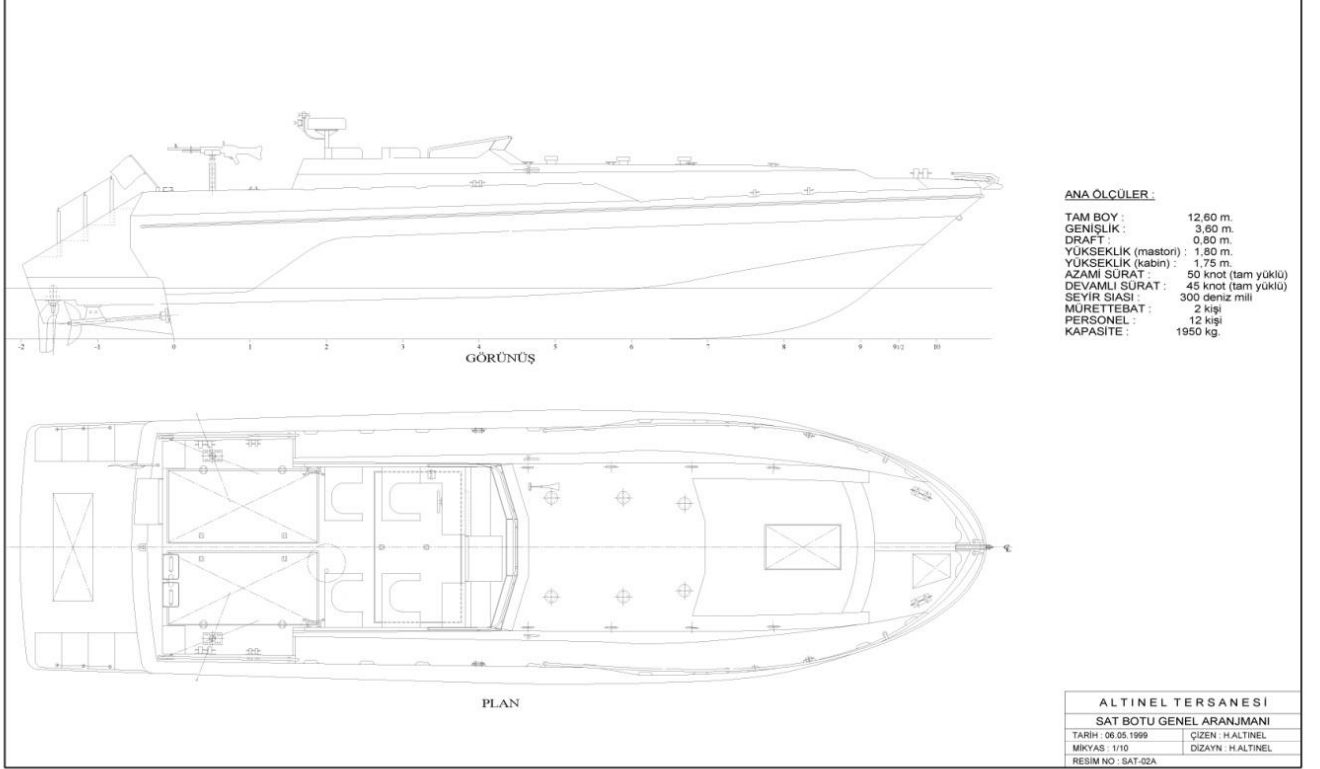
All other items will be definition at the contract,

Delivery and acceptance tests and training will be done in Istanbul, Turkey,

Boats can be transfer by ship, truck and or plane.

ALTINEL SHIPYARDS INC

www.altinelshipyards.com info@altinelshipyards.com



ALTINEL SHIPYARDS INC

www.altinelshipyards.com info@altinelshipyards.com



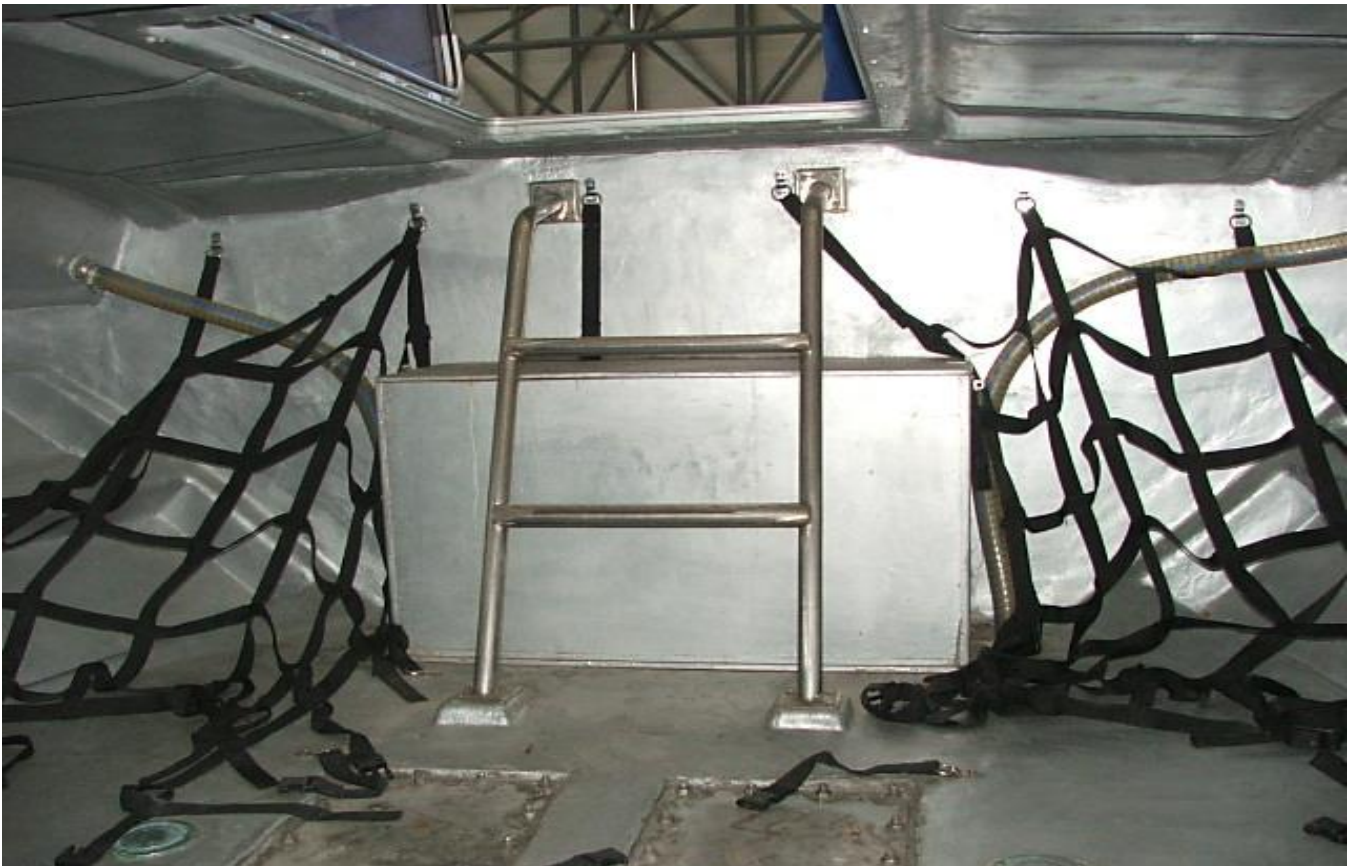
ALTINEL SHIPYARDS INC

www.altinelshipyards.com info@altinelshipyards.com



ALTINEL SHIPYARDS INC

www.altinelshipyards.com info@altinelshipyards.com



ALTINEL SHIPYARDS INC

www.altinelshipyards.com info@altinelshipyards.com



ALTINEL SHIPYARDS INC

www.altinelshipyards.com info@altinelshipyards.com

